



satisfied full
filled HUNGRY
desperate
famished
craving
deprived

(full)fill
Shine 2010

John 6:35

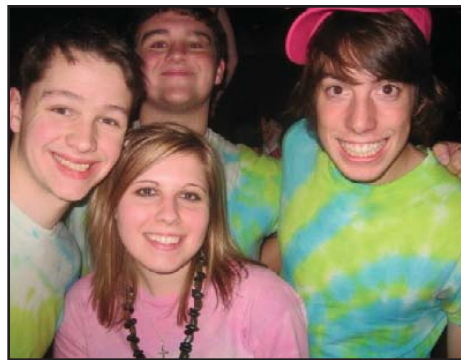
what fulfills you?
a relationship? money? food?

shine (weekender) 2010 will focus on our
physical, emotional, and spiritual hunger.

john 6:35 tells us that only Jesus - our bread of life - can
fulfill us and satisfy our hunger.



Guest Speaker
Suzanne Reece



Worship Leaders
In As Much

<u>Cost</u>	<u>BGAV Churches</u>	<u>Non-BGAV Churches</u>
Lodge	\$102.00	\$109.40
Hotel	\$138.00	\$149.40

April 16-18, 2010

**who should come: girls in
middle & high school and
their adult leaders
where is it: eagle eyrie
lynchburg va**

Shine will begin on Friday night at 8pm (please eat dinner before you come) and will be over at 11am (lunch on your own) on Sunday. In an effort to have participants experience hunger on a small scale, everyone is asked to fast from lunch on Saturday. If someone in your group is unable to do so, please contact Eagle Eyrie to make arrangements for that person to have lunch or bring something with you.

Registration opens **January 1, 2010**

Register online or by mail:

Eagle Eyrie Conference Center,
1 Eagle Eyrie Dr, Lynchburg, VA 24503
434.384.2211 - www.eagleeyrie.org

The cost of your Weekender t-shirt is included. See t-shirt form on website.

Other questions:

see www.wmuv.org and click on "Shine 2010"
Or contact Kristen White -- kwhite@wmuv.org
View the "Shine" promo video at
www.youtube.com/user/wmuofvirginia